



# NEC

## RESTORATION

**Extraordinary**  
Landscapes



**Momentum** is growing to create sustainable ecological habitat for homeowners.

When properly implemented; pollinators, birds, insects, critters, the environment and humankind all benefit.



Depending on the scale and time frame of the project, this process can be complex.

Let **Natural Environments** help you navigate this conversion with care.



# STEPS FOR RESTORATION





# REMOVE THE EXISTING



## **Spray**

Great care is taken when applying herbicides. We source appropriate herbicides to kill plant material. This method takes about a week for results to show.

## **Scrape**

Depending on the scale of the project, this can be done manually with a sod kicker or with a bobcat that literally scrapes the top inches of soil away.

## **Cover**

A longer but more environmentally friendly method of plant removal is smothering the plants with cardboard or black plastic/fabric.

## **Till**

Requires the use of a tiller or tractor to turn the topsoil in upon itself, exposing the roots to the sun, which dries them out and kills the plants.



# PREPARE THE SOIL



## **Turn**

Flipping removed plant matter upside eliminates waste and reduces costs. Seeds/plugs can be planted into the newly exposed layer of topsoil.

## **Till**

Tilling loosens the subgrade, aerating the soil and allowing water to penetrate deeper. A fresh layer of loose soil allows germinating seedling roots to easily penetrate the soil.

## **Topdress**

Depending on soil conditions a topdress layer may be necessary. Prairie seeds can tolerate tough conditions and this step may not be necessary.

## **Rolling**

Lightly over rolling freshly tilled soils gently mixes top and subsoils binding them together to reduce erosion.





# SOW THE SEED

## Hand Sowing

The most economical method is to hand broadcast seeds upon freshly prepared soil utilizing customized seed blends. This method creates a naturalized look.

## Spreader

To cover more area a hand crank broadcaster or push spreader can be utilized to broadcast seed over larger areas.

## Hydroseeding

Utilizing a liquid medium, seeds are sprayed upon a prepared surface.

## Tractor

For larger plots a tractor may be necessary. A number of methods from a seed baskets, drills, tilling or raking can be employed for planting. Utilizing a tractor or spreader can create visual planting lines, creating a more manicured effect.

## Plugs

For more immediate visual impact, 2" or 4" plugs can be interplanted into seeded areas to enhance restoration in the first year of growth.

## Bareroot

Bareroot trees and shrubs can be an economical way to add interest into a prairie restoration in seeded areas. This may be done to protect against soil erosion or establish a thicket, upland or edge habitat.





# ENSURING SUCCESS

## **Cover Crop**

Mixed into a seed mix is a cover crop. This crop quickly germinates while the perennial species establish. The cover crop helps reduce erosion and inhibit weed growth.

## **Coir**

A loosely woven mat typically made from biodegradable material such as coconut husks are spread over the soil to reduce erosion and stabilize the soil surface while the seeds germinate. This product gradually biodegrades while the seedlings grow through it.

## **Straw**

Loose straw is strewn across the surface of the planted soil to help reduce erosion and block any potential weeds embed into the fixed soil surface created through straw and dirt.





# RESTORATION COST CATALOG





# GENERAL SEED

**\$0.80 / SF**

## Installation & Maintenance Requirements:

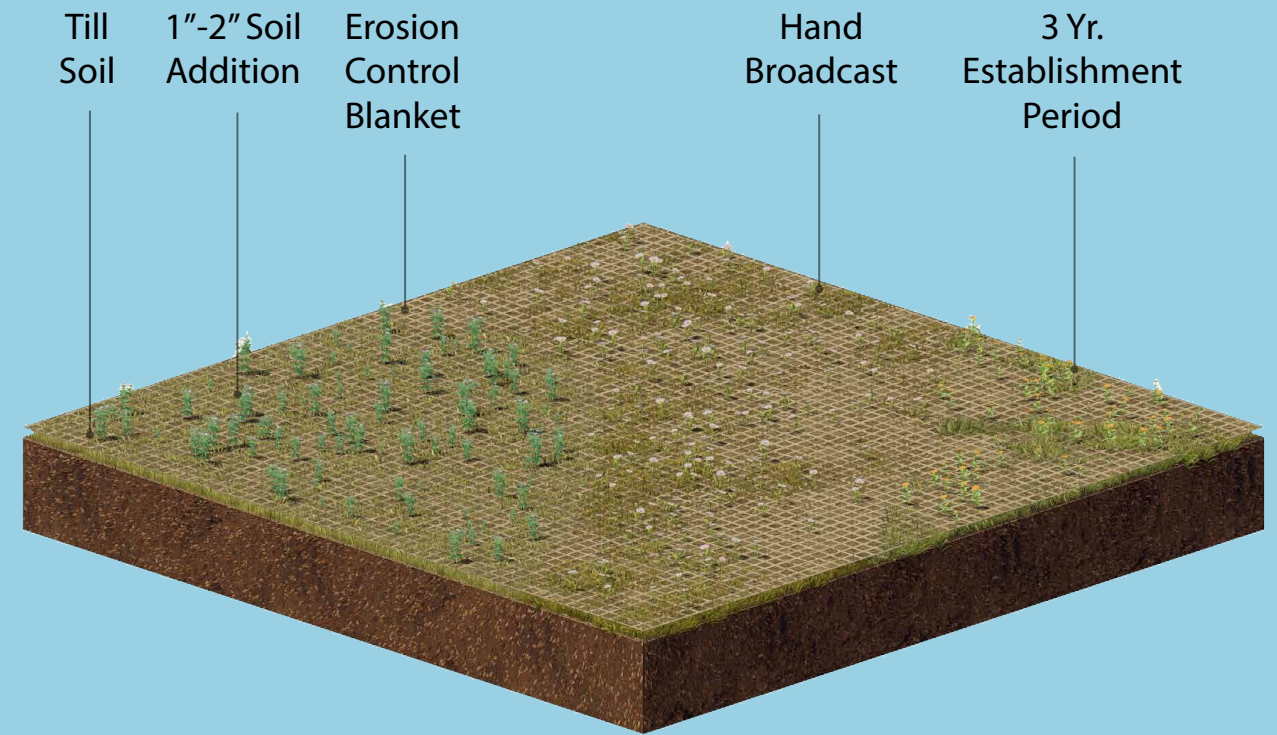
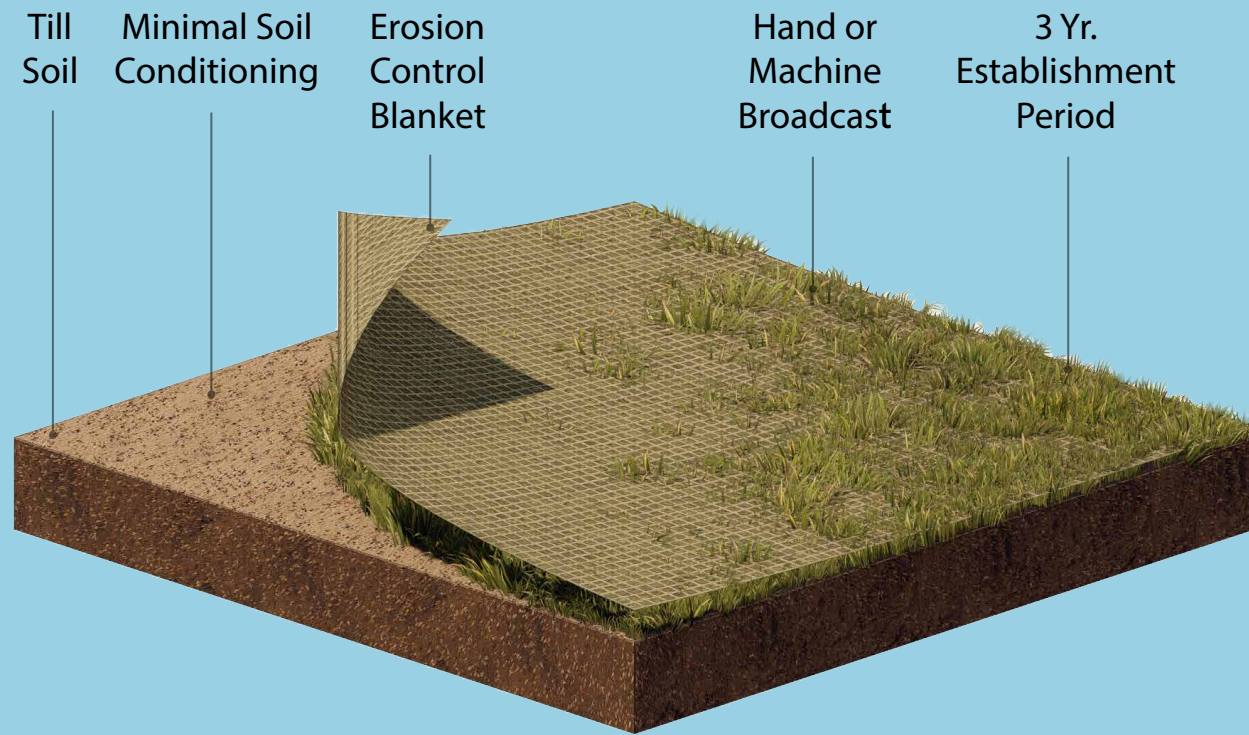
- Tilling
- Minimal Soil Conditioning
- Erosion Control Blanket
- Yearly Mowing
- Hand Pruning or Spraying
- Spot Seeding

# PREMIUM SEED

**\$1.20 / SF**

## Installation & Maintenance Requirements:

- Soil Additions
- Erosion Control Blanket
- Hand Broadcasting
- Spot Mowing
- Hand Pruning or Spraying
- Spot Seeding





# SEED W/ PLUGS

**\$5.00 / SF**

## Installation & Maintenance Requirements:

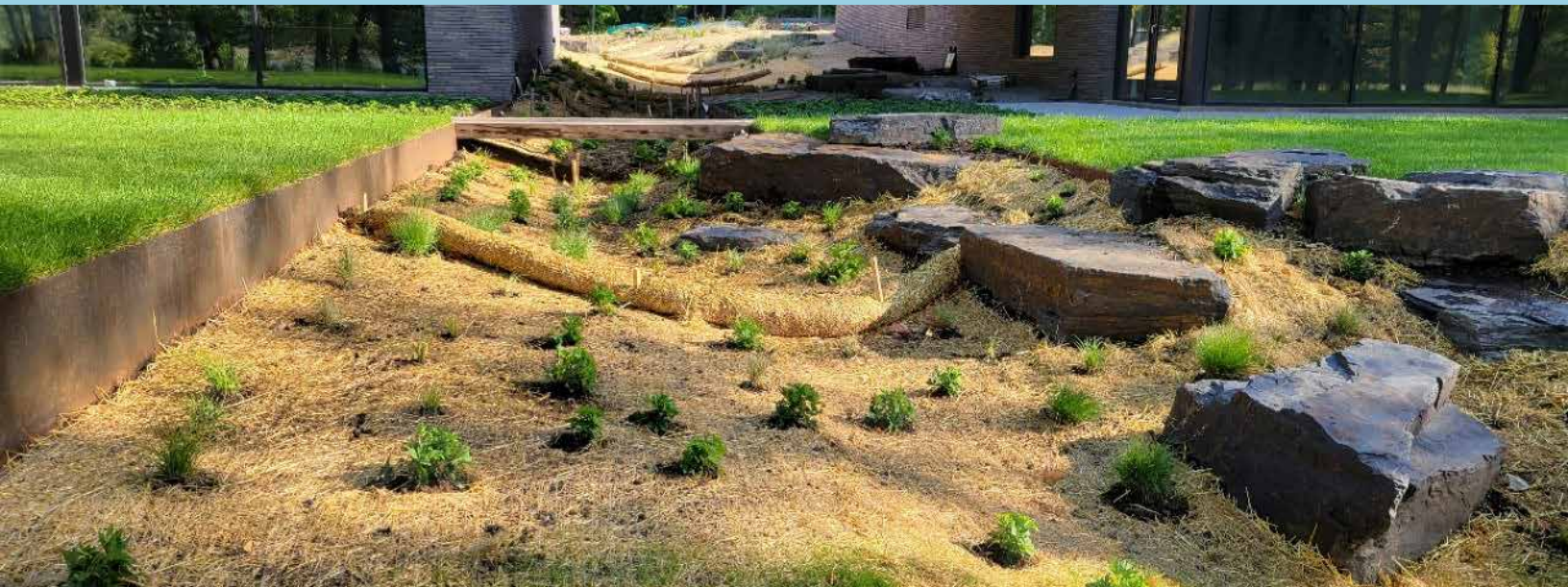
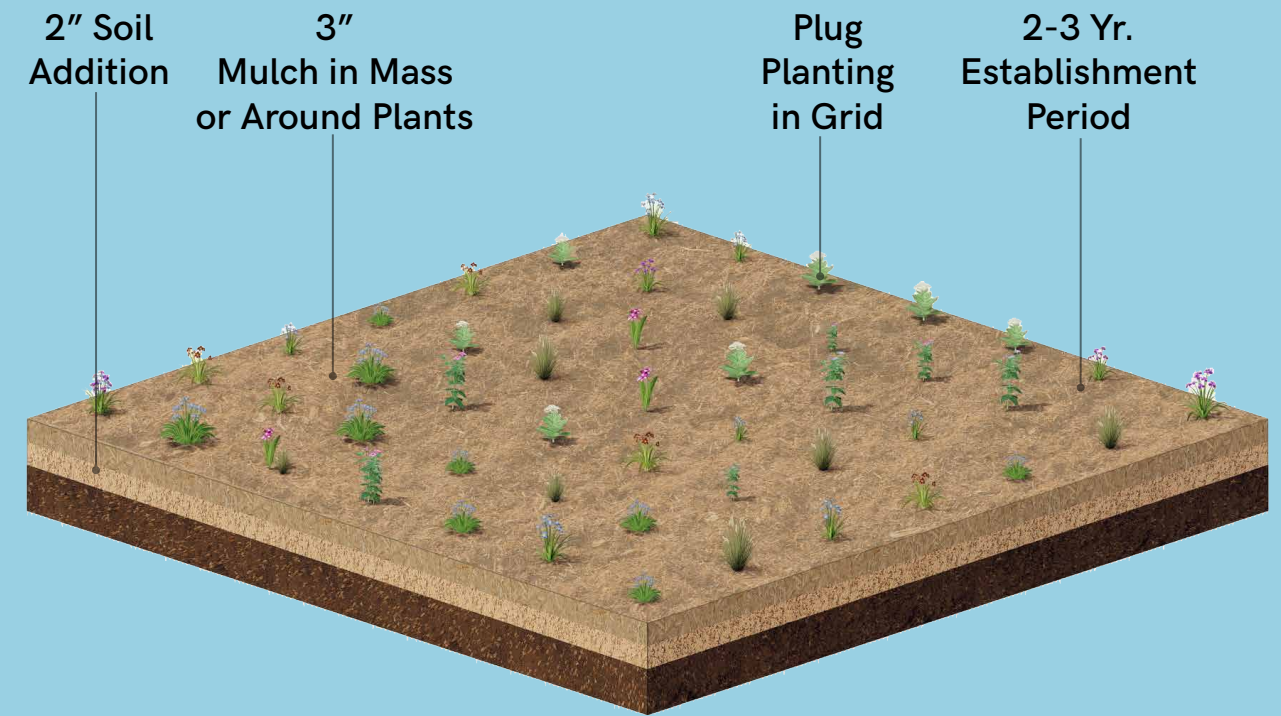
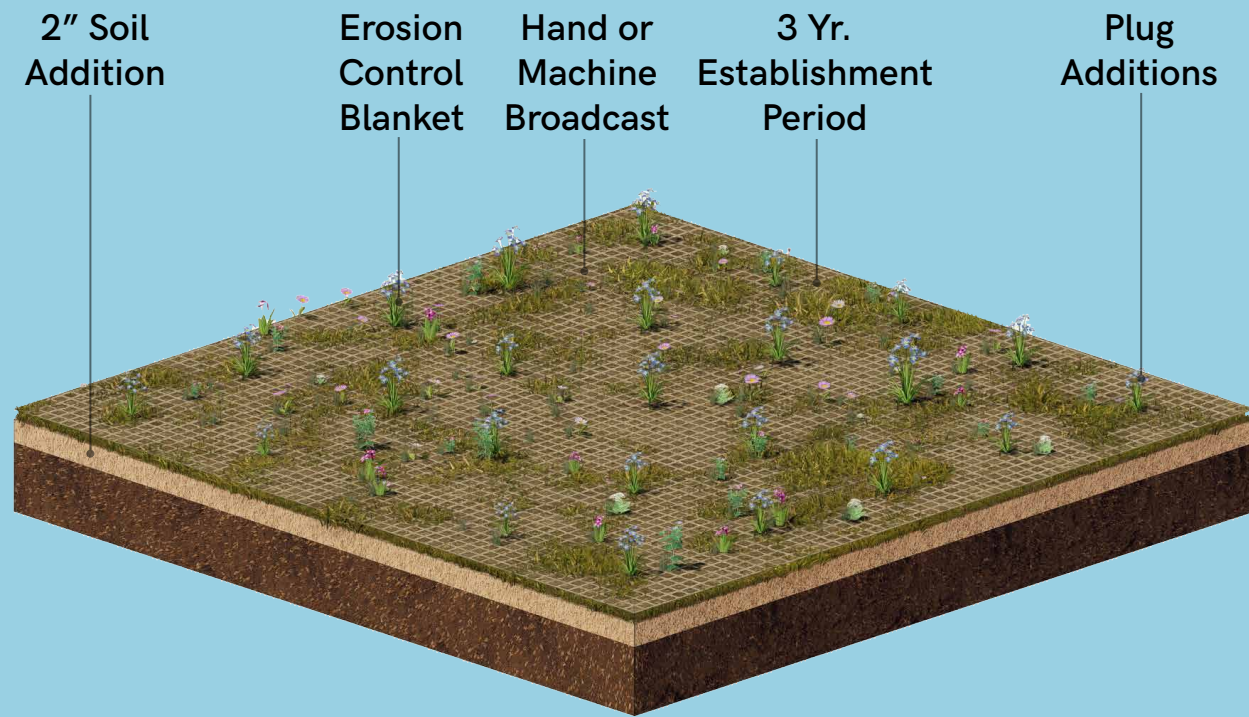
- 2" Soil Additions
- Erosion Control Blanket
- Seed Broadcasting
- Plug Planting
- Spot Mowing
- Hand Pruning or Spraying

# PLUGS W/ MULCH

**\$6.50 / SF**

## Installation & Maintenance Requirements:

- 2" Soil Addition
- Mulch Installation
- Plug Planting
- No Mowing
- Less Weeding
- Quicker Establishment





# 1 GAL w/ MULCH- 24" SPACING

**\$18.00 / SF**

## Installation & Maintenance Requirements:

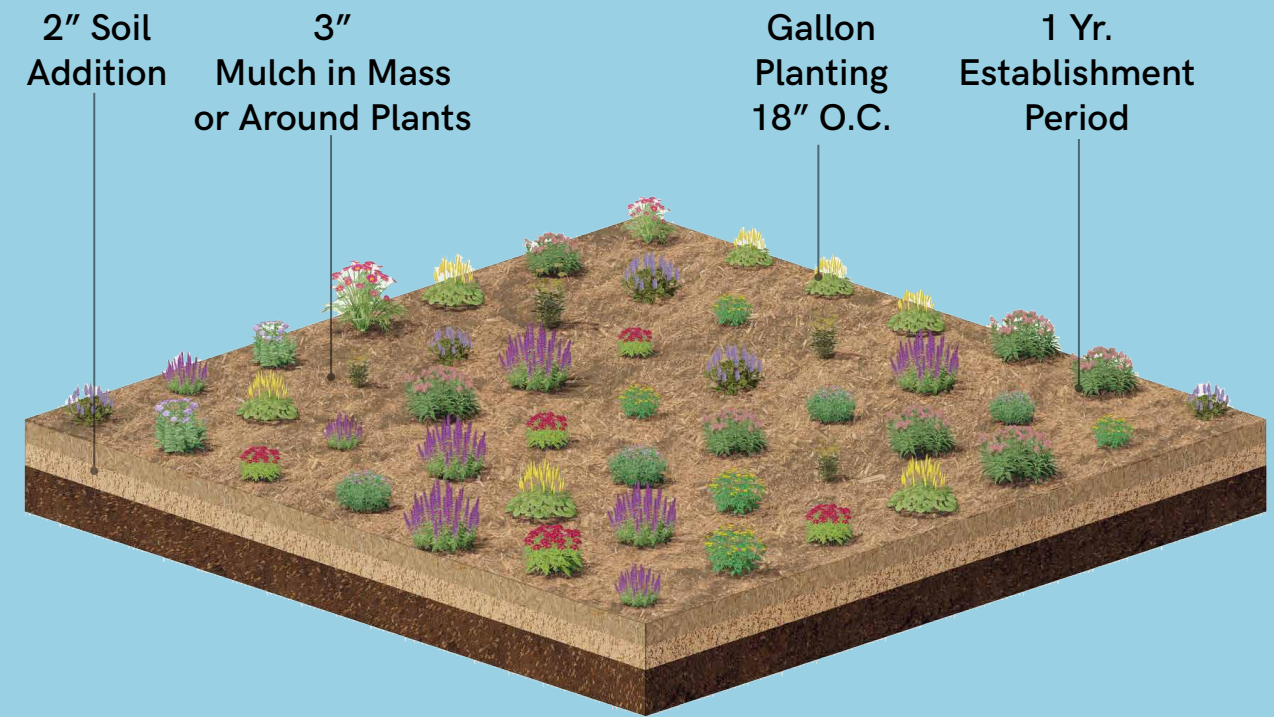
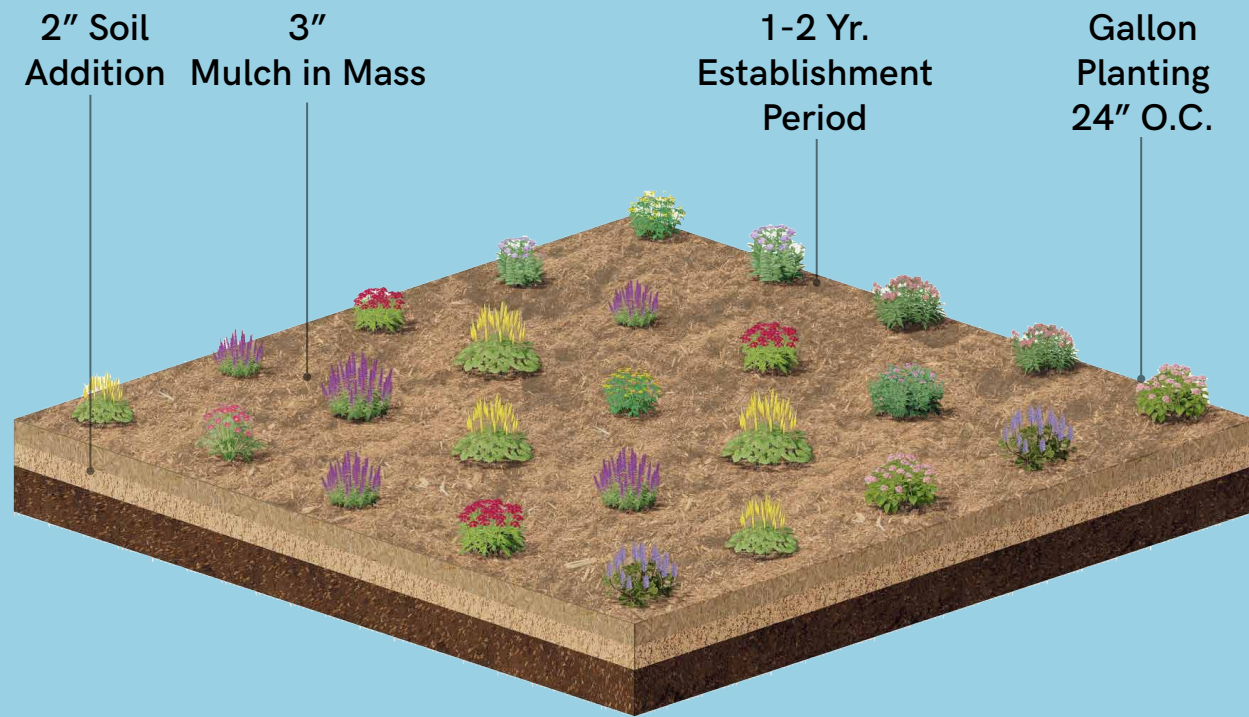
- 2" Soil Addition
- Mulch Installation
- Gallon Planting High Spacing
- No Mowing
- Less Weeding
- Quicker Establishment

# 1 GAL w/ MULCH - 18" SPACING

**\$22.50 / SF**

## Installation & Maintenance Requirements:

- 2" Soil Addition
- Mulch Installation
- Gallon Planting Medium Spacing
- No Mowing
- Less Weeding
- Quicker Establishment







**NEC**

tel: 763.544.8002

[www.naturalenvironmentscorp.com](http://www.naturalenvironmentscorp.com)

3243 Winpark Drive, New Hope, MN 55427